

# PERTH FLYING SQUADRON YACHT CLUB

## ROTTNEST CONVOY

VOYAGE NOTES FOR  
Thompsons Bay  
Longreach Bay  
Geordie Bay

## Rottnest Convoy: Notes

### Thompsons Bay / Longreach Bay / Geordie Bay

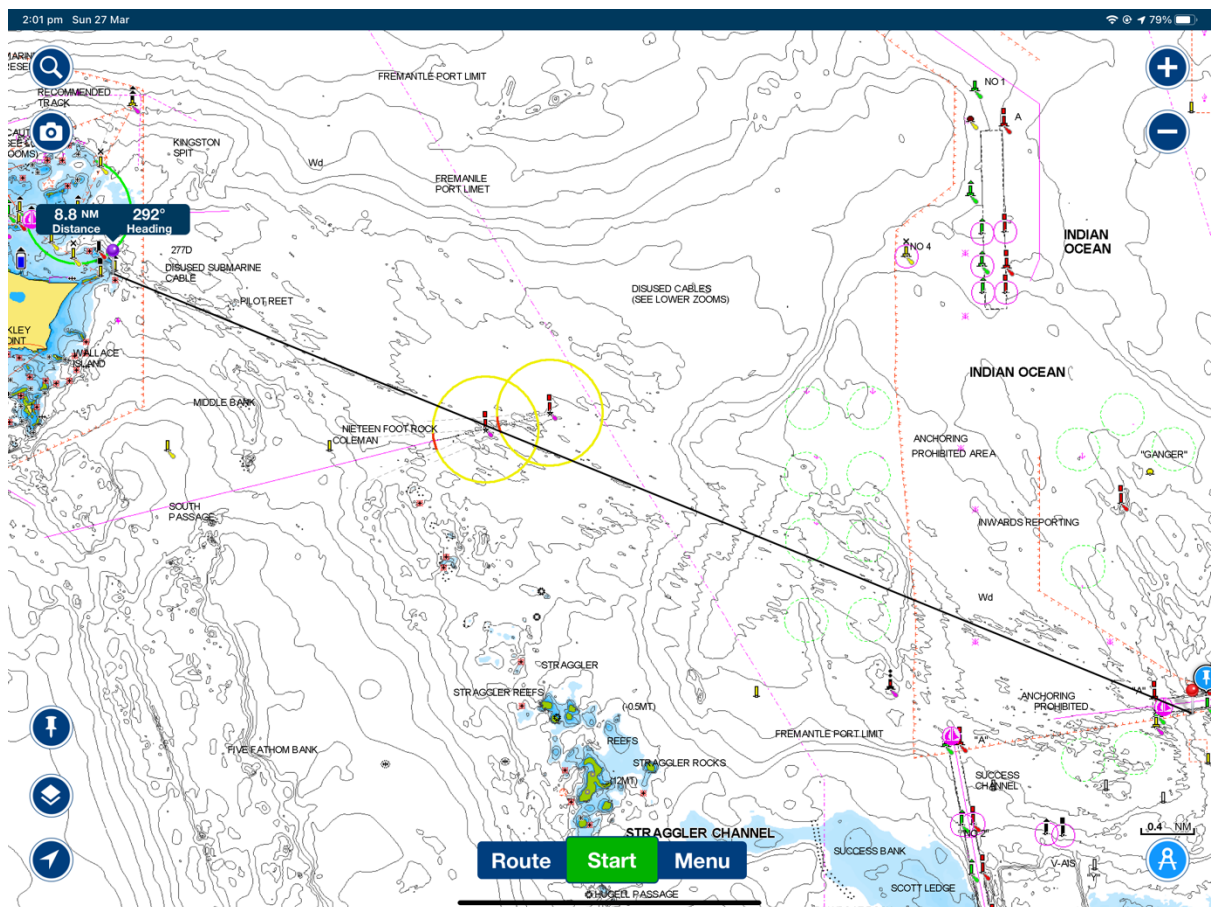
Leaving the club at 08:15 heading down the River to Fremantle harbour heads.

**\*\* Note \*\*** As you get used to the markers in the river, as you head to Rottnest a simple I remember which side of the markers I should be is **RED RIGHT TO ROTTNEST.** \*\*

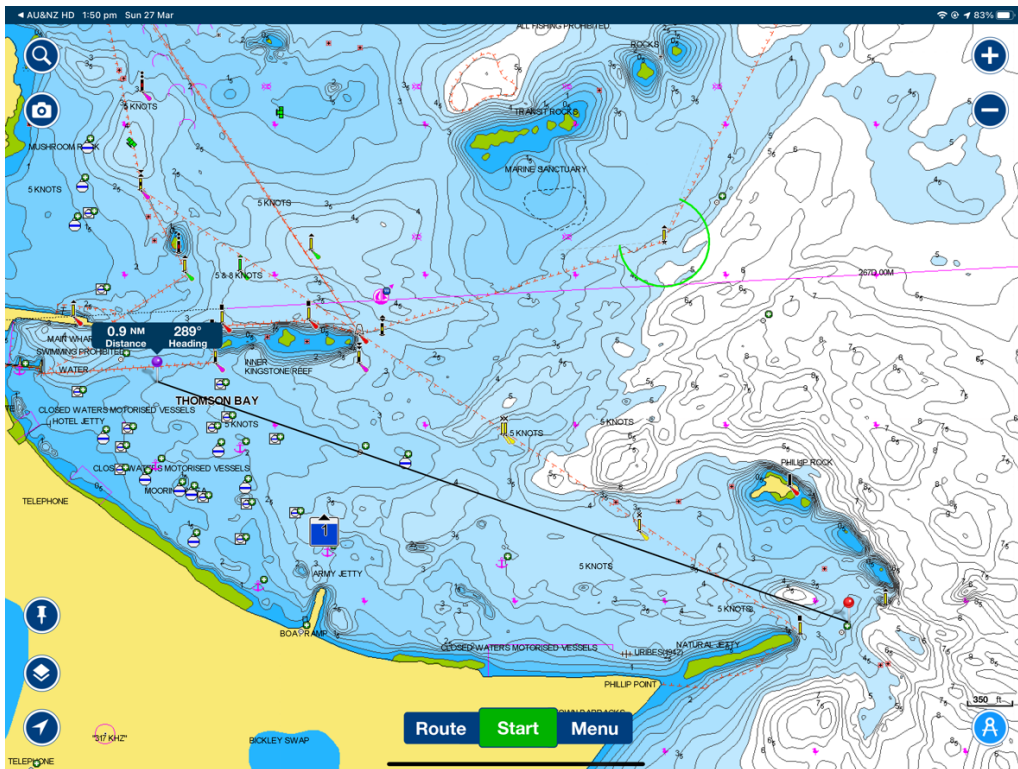
**\*\*\* (Until I reach the entrance to any new harbour or Bay) Then it reverses..... that if I keep the red spit posts on MY starboard side as I head towards Rottnest that must mean the green ones are on MY port side \*\*\***

**An Example:** I leave the club and head toward Fremantle harbour and I keep the RED spit posts on my starboard side and the green ones on my port side. I continue past the heads out to sea and as I approach Thompson Bay (Or any bay or harbour) I switch the post around and entre Thompson Bay with the RED spit post now on my port side and the GREEN spit post on my Starboard side.

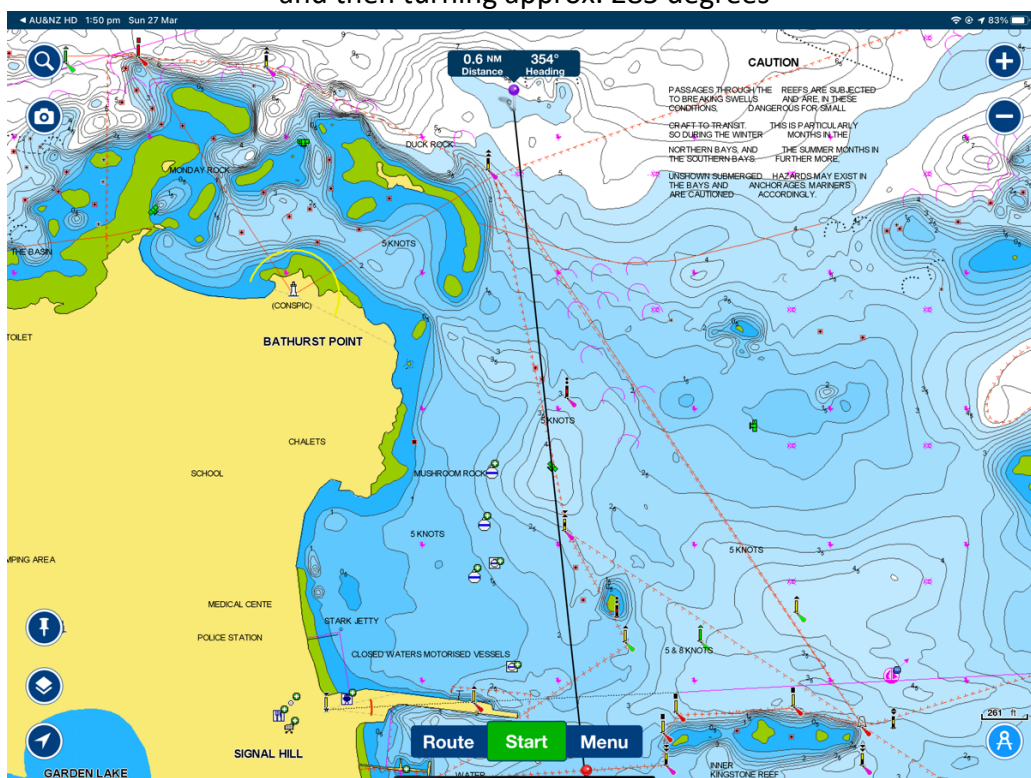
Upon exiting the Harbour Heads depending on wind and swell often we head between 285-295 degrees. As you can see below all be perfect 292 degrees is on a still day:

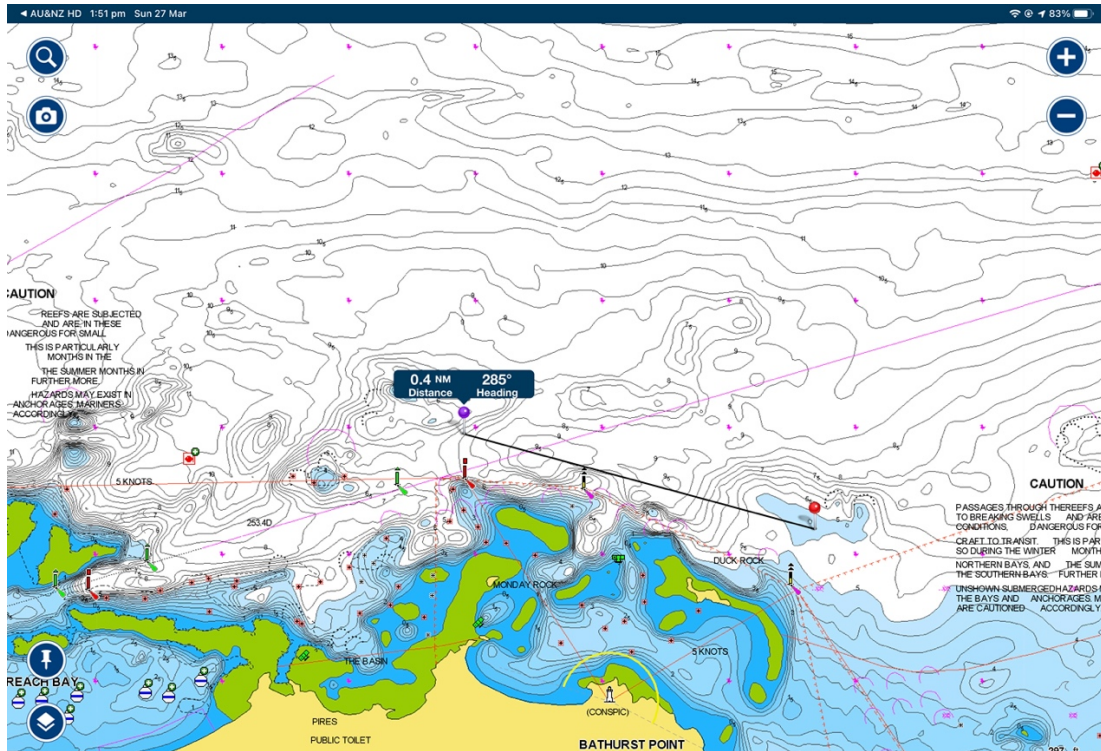


Once into the markers at the southern end of Thompson Bay – You must reduce speed to 5 Knots and head approx. 289 Degrees so as to miss the markers on the starboard side and travel through to the next destination.



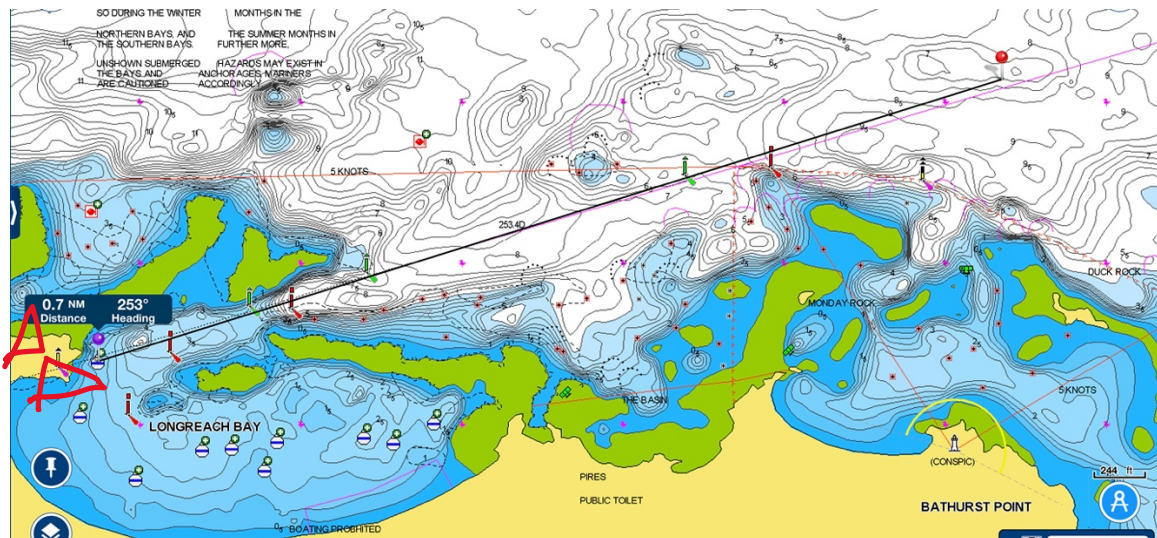
Then adjust as we make our way out of Northern end of Thompsons Bay to 354 Degrees and make our way to the Northern Marker keep the Spit posts to our Starboard and at 5 knots and then turning approx. 285 degrees



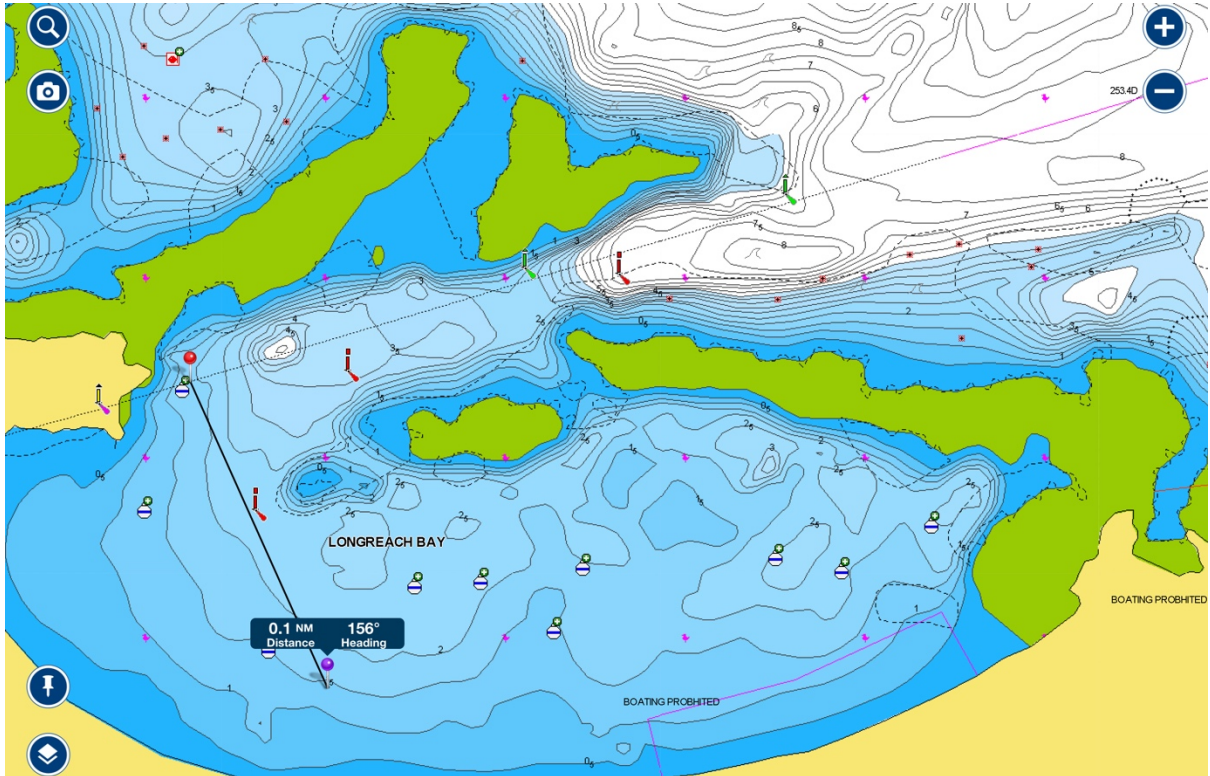


### LONGREACH BAY

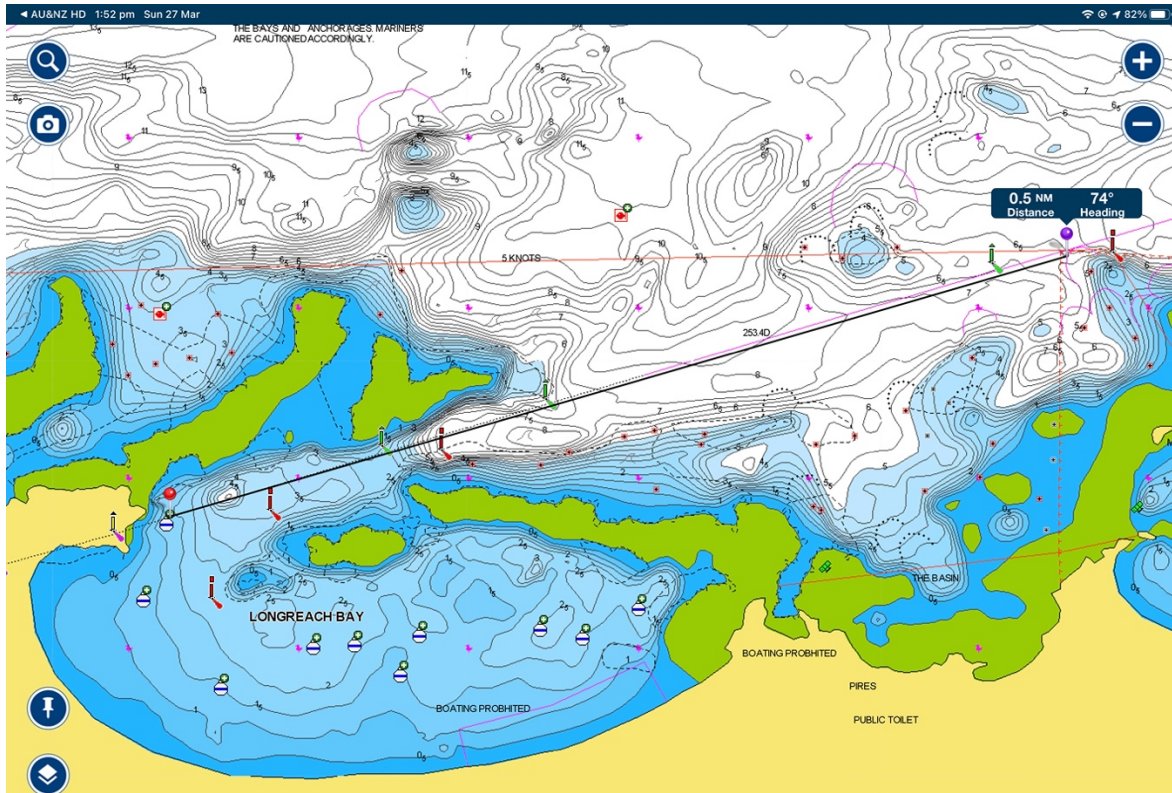
After the marker we will be heading into Longreach Bay. Using the formula to make sure you are the correct side of the markers you want the **RED** spit markers on your Port as you are heading into a Bay/Harbour and the **Green** ones on your starboard heading approx 253 Degrees – Also look for the Triangle Guide markers at the base of the cliff and on the upper edge of the cliff. They are triangles that if you get the two points to meet show you clear access to the bays.



And then as there are no Green ones to use as markers you just go around with the **RED** ones on your Port side.

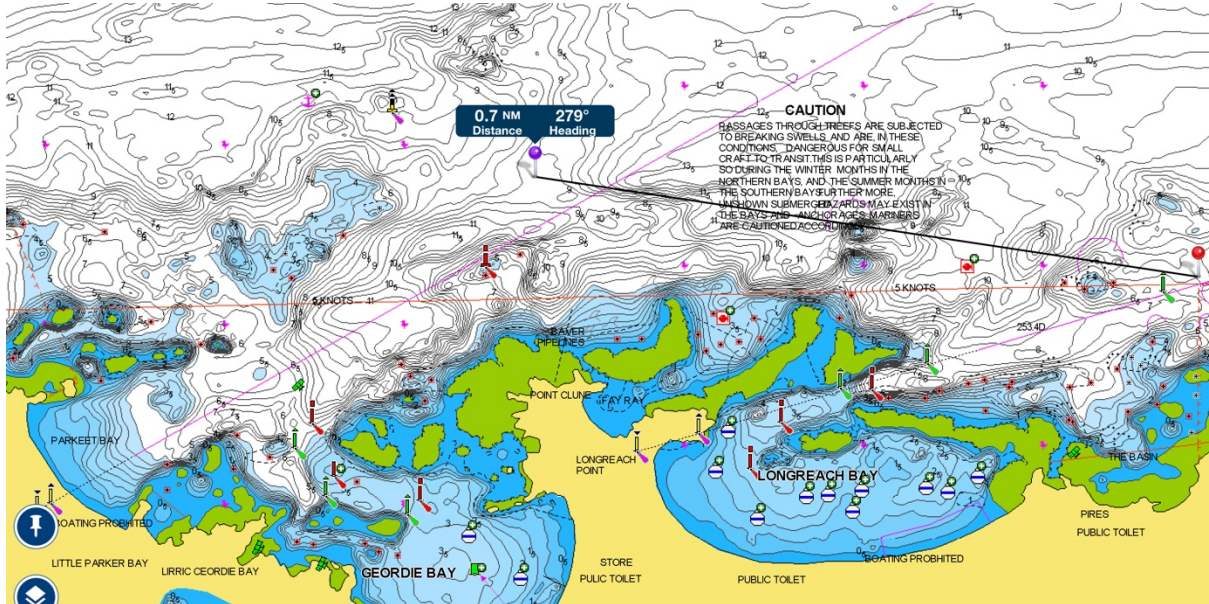


When exiting Longreach approx. 74 degrees you now reverse the markers again as you are heading out of a port / Harbour or Bay so keeping the **Green** markers on your Port side and the **Red** Markers on the Starboard side

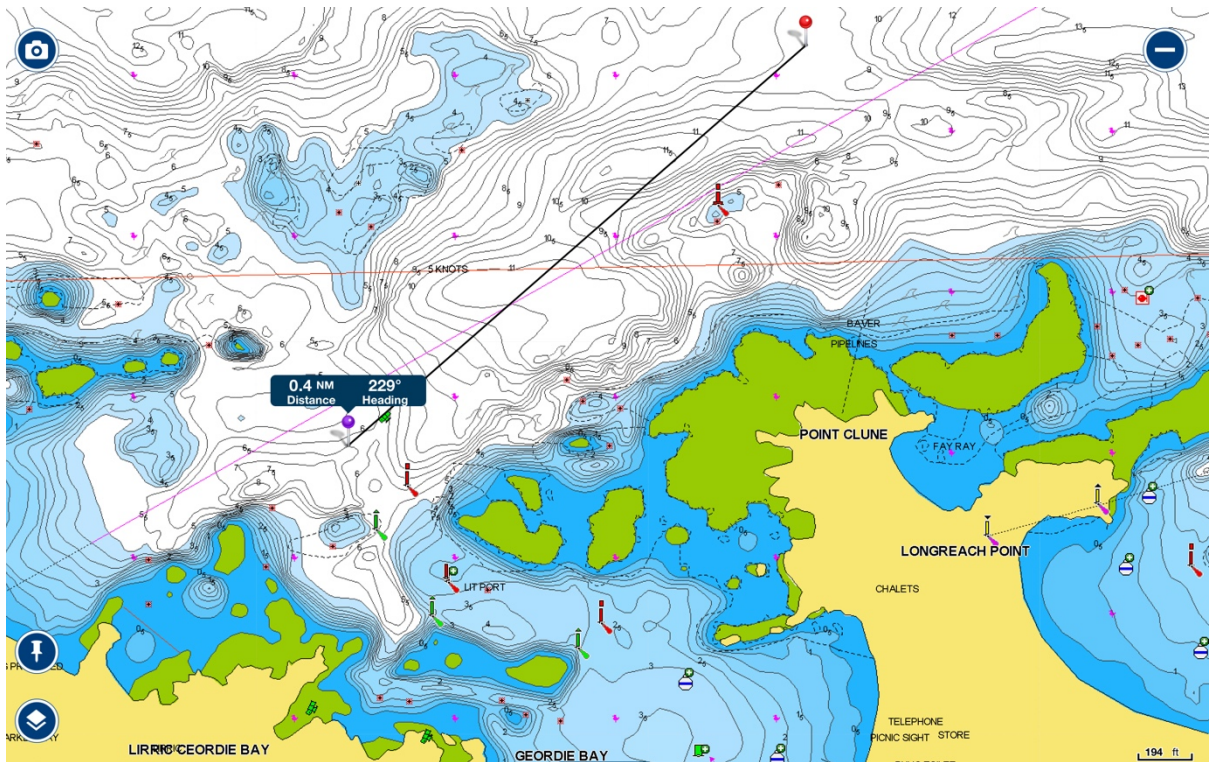


## Geordie Bay

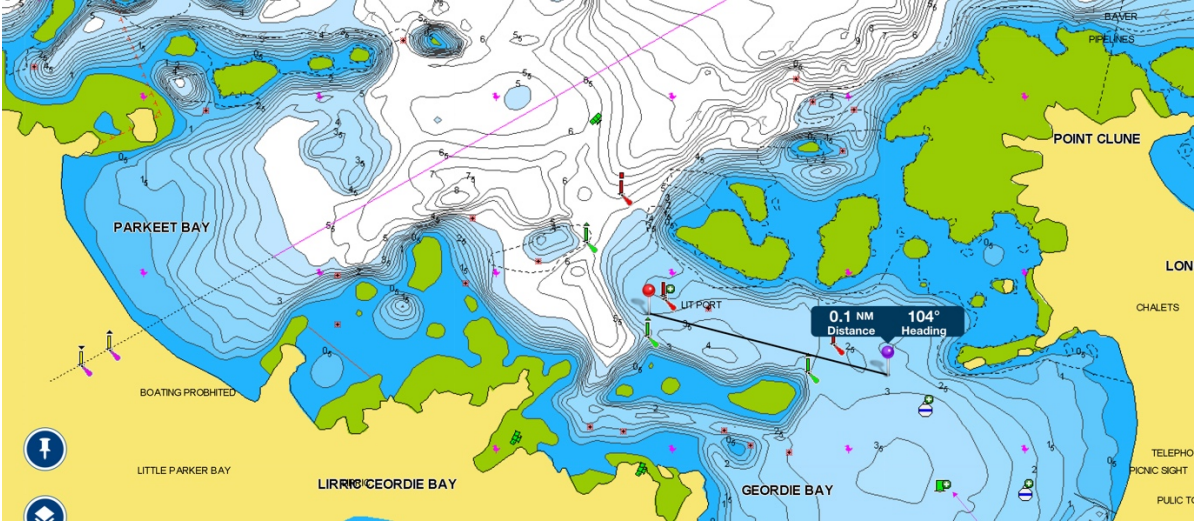
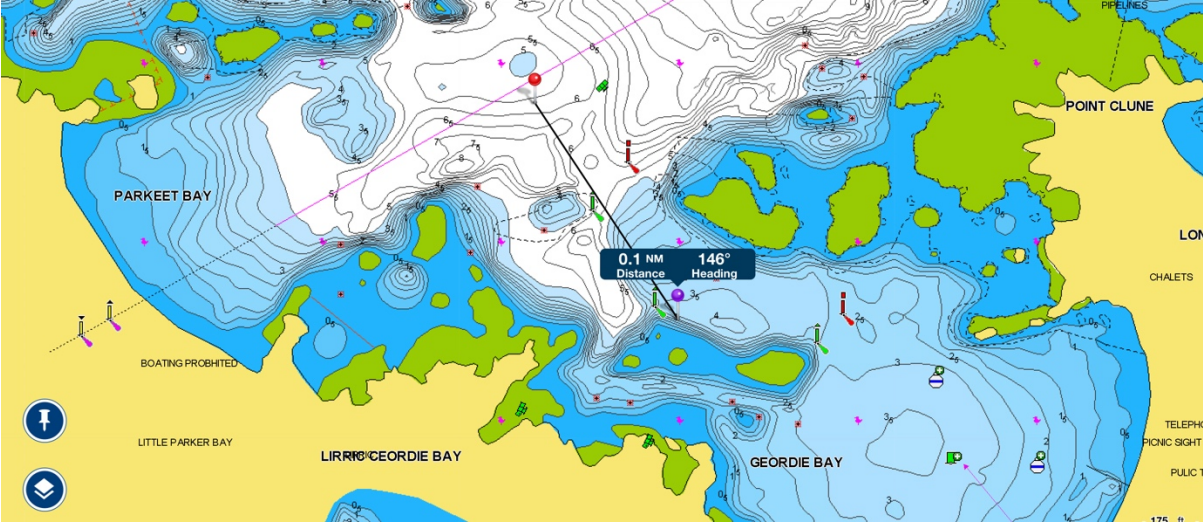
After leaving the last Red and Green spit posts at Longreach Bay turn port roughly 279 degrees



When you are alongside the red floating spit post that will be on your port side you can change direction to head into Geordie Bay on 229 Degrees and again look out for the triangle markers to guide you in and again change as you are going into a port/harbour/bay and keep the Red spit markers on your Port and the Green markers on your Starboard



Then change to around 146 Degrees and then again to 104 Degrees until you are in the bay.

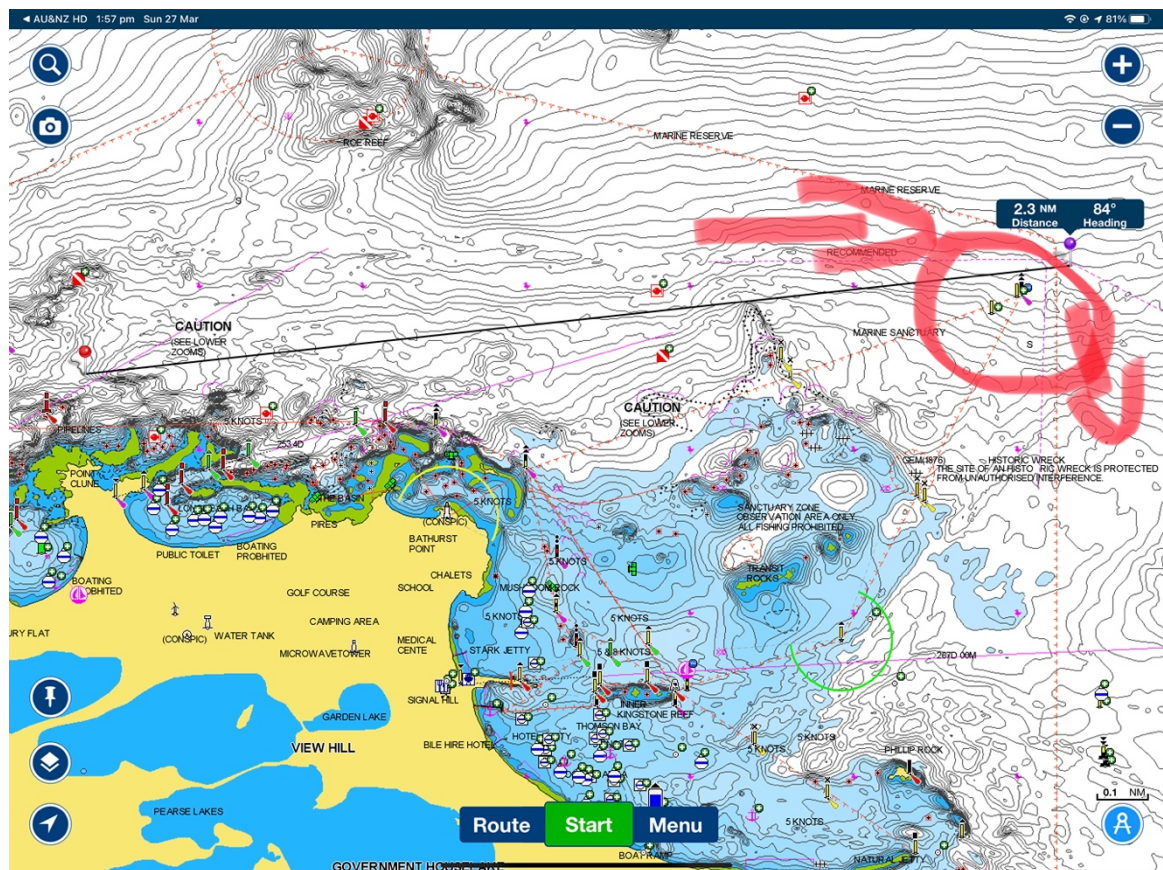
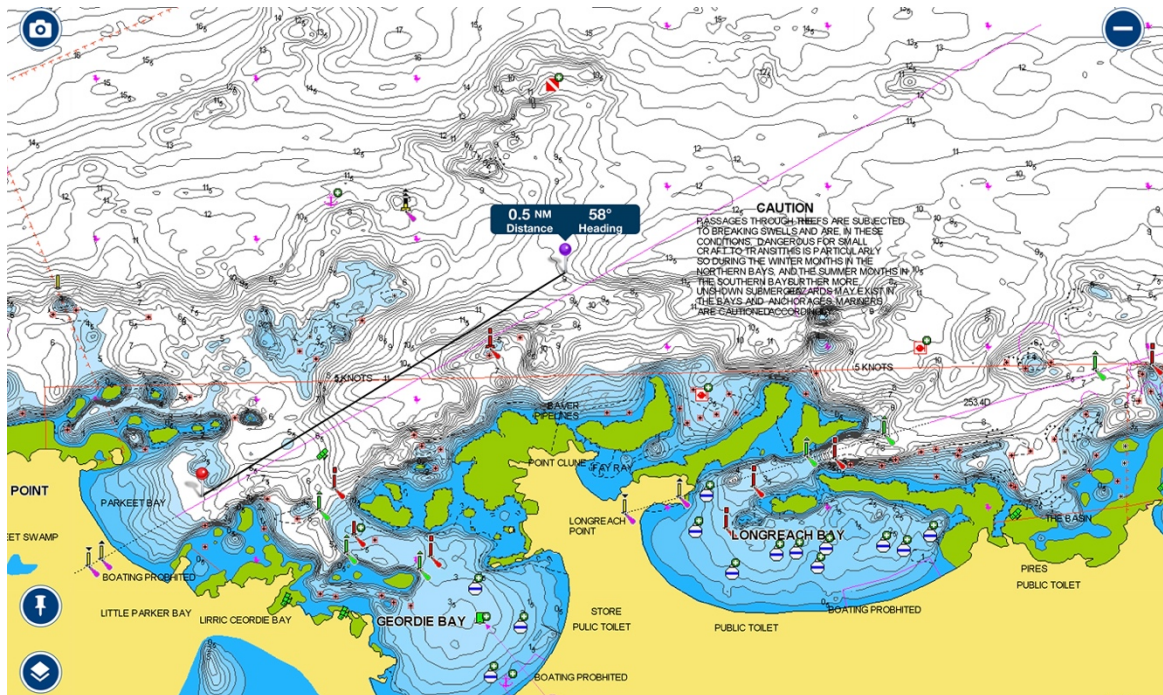


Follow us then out (remember to reverse your spit posts: Red on your port and Green on your starboard when exiting and we will go to Parakeet bay for a raft up lunch.

CONGRATULATIONS YOU HAVE JUST ENTERED THREE BAYS

For those of going straight home we will go North East of transit to show you the safe way to go around and then straight home to Fremantle.

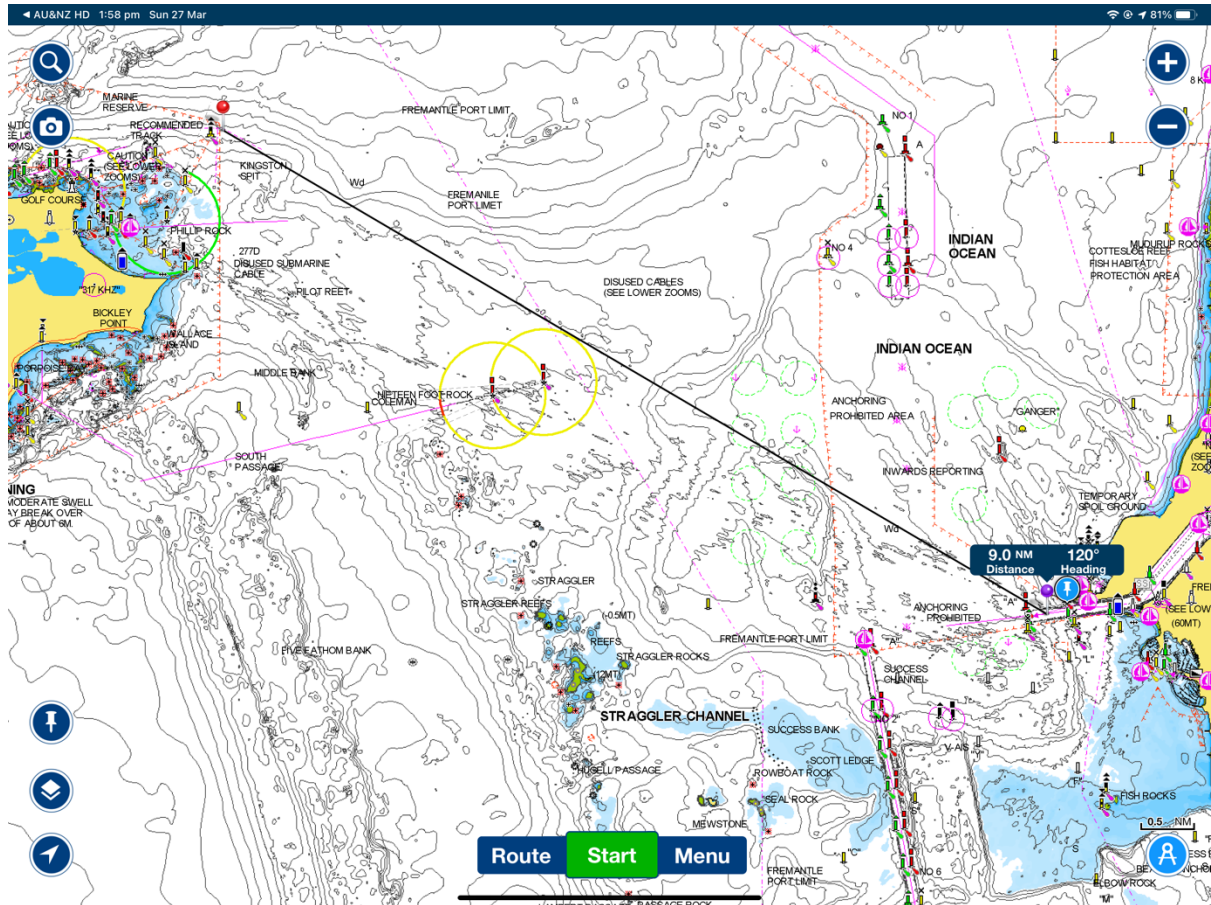
Head approx. 58 degrees and then we will be turning approx. 85 Degrees towards Kingston Spit as per red circle around it below. We will stay North of it and then turn south once we have gone past it





Heading home after Kingston Spit head approx. 120 Degrees towards the Fremantle harbour

Using a visual marker as you get closer if you can see the top of the marine museum roof you want to be slightly to the right of it and also you can use the cranes in the harbour as a visual point and stay right of those as you head home.



\*\* Last reminder when entering any Harbour/port/bay keep the Red marker spits to your port and the Green marker spits to your starboard.

Welcome home.